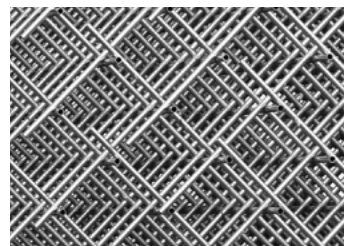
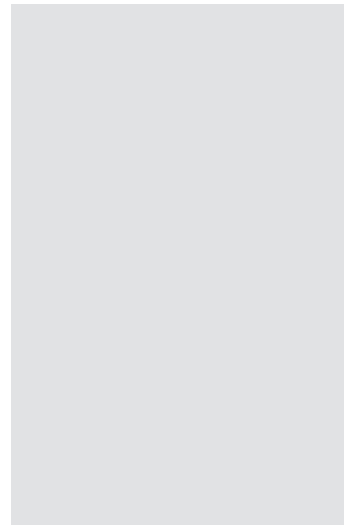
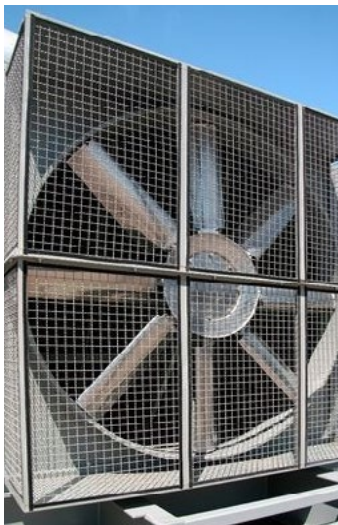
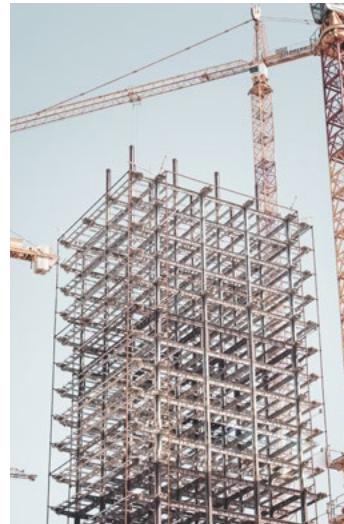
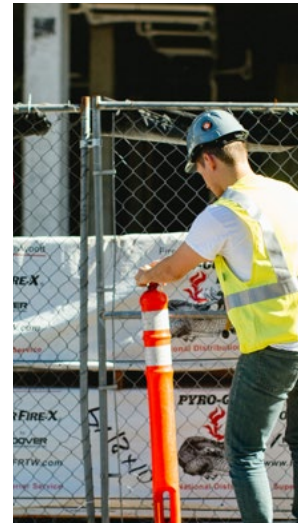
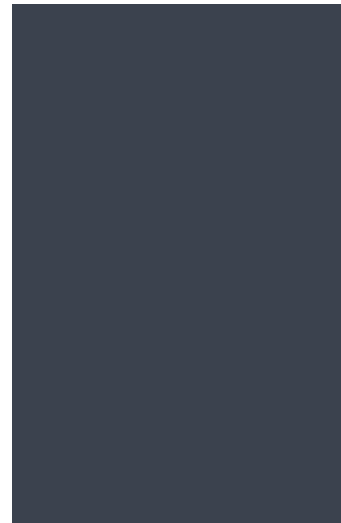
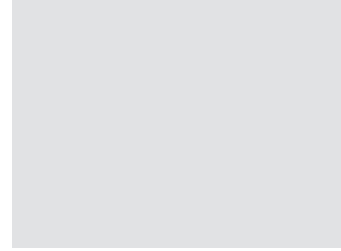




Welded Stainless Mesh

Perfect for many home uses as well as
in agricultural and industrial sectors
with extreme environments.





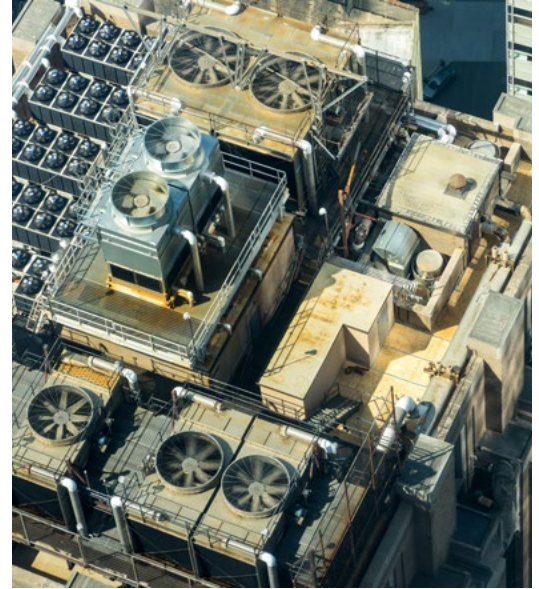
Tough & Sturdy, Consistent & Functional

Welded stainless mesh offers outstanding durability and strength and can be used in many ways, including in heating and cooling systems, food processing, and building construction.

Welded wire mesh comes in assorted metal alloy types and opening sizes to fit any project. From pest control and soffit screens to air vents and radiator grills, this material goes the distance.

Explore Your Options: Metals, Weaves & Finishes

Welded wire mesh delivers dependability even in demanding applications and extreme heat and cold. Check out some of the incredible options available.



Metals



Stainless Steel

Whether they're welded or woven, stainless steel mesh materials share similar benefits and uses. Keep in mind there are a few differences depending on the alloy.

Benefits

- ☑ Resists breaking under high stress
- ☑ Lasts long without wearing down
- ☑ Remains in good condition without rusting or corroding easily
- ☑ Passes Restriction of Hazardous Substances Directive (RoHS) regulations

Uses

- ☑ Grills for tractors
- ☑ Wire racks for drying food
- ☑ Spark arrestors for chimneys
- ☑ Infill panels for buildings
- ☑ Soffit screens for ventilation

T-304

T-304 is the standard alloy for stainless steel. It's acceptable for most uses, but less corrosion resistant than T-316. However, it is more affordable.

T-316

T-316 is the premium alloy for stainless steel mesh. Thanks to its exceptional resistance to corrosion, T-316 shines in marine environments involving salts, acids, and seawater.

Weave Types



Welded or Woven?

Woven stainless wire mesh is well known for its versatility. It's used in many applications, including air vents, insulation containment, sieving, sifting, and even in home gardens.

However, when you need a mesh that can withstand more demanding projects, such as industrial fencing or machine protection, welded stainless may be the way to go. Welded stainless mesh draws its strength from resistance welding rather than a filler metal connecting its wires, creating a hardy, consistent product.



Surface & Finish Coatings



Surface and finish coatings also affect the functionality and look of wire mesh products. Welded stainless mesh uses a mill finish.

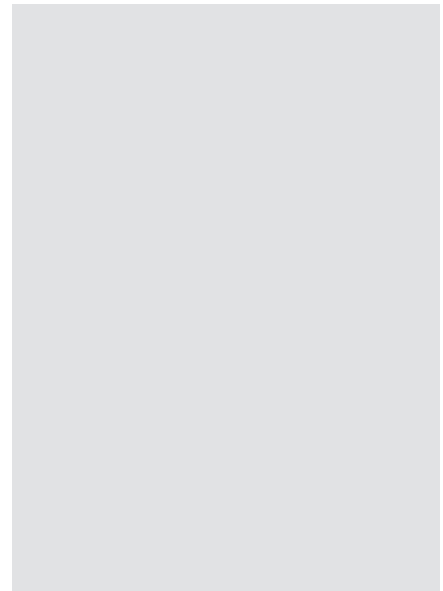
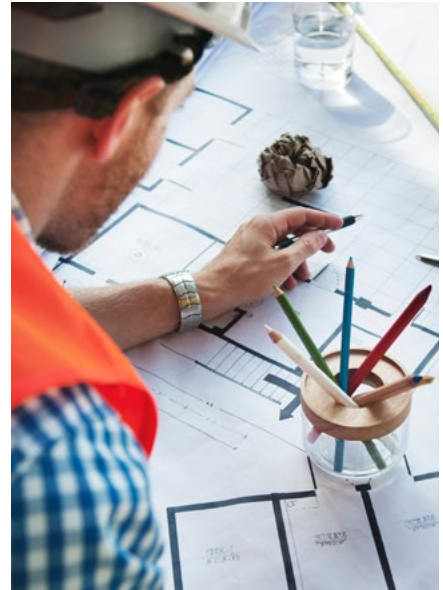


Welded wire mesh has a mill finish. Mesh using a mill finish tends to be rougher to the touch, but some are more uniform and polished.

Welded Stainless Mesh is Practical & Hard-Wearing

Whether you're a construction worker, homeowner, or electrician, welded wire mesh can transform your project and deliver the results you want.

Trust in the durability of your materials! We invite you to get in touch to discuss your project with our expert team.



This product guide provides an overview of just some of the welded stainless steel mesh products TWP Inc. offers. Contact us to learn more about our products and services.



www.twpinc.com | sales@twpinc.com
Shop Online or Call 800-227-1570 / 510-548-4434

TWP inc. is a California corporation, founded in 1969, with its principal office at 2831 Tenth Street, Berkeley, California.